



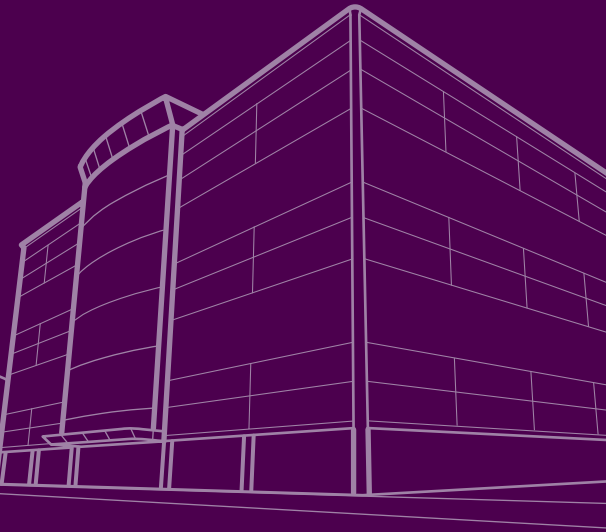
**Corus Colors**

---

**Colorcoat HPS200 Ultra™**

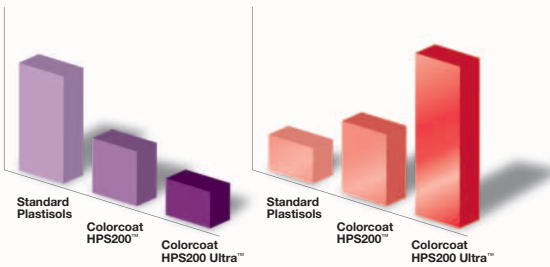
---

**Ultimate in durability**



# Unrivalled product performance

## Colour for life



Colour change (ΔE)

Gloss retention (%)

Colorcoat HPS200 Ultra™ now delivers twice the colour and gloss retention of standard plastisol products and easily exceeds the requirements of the most demanding Euronorm 10169/2 classification Ruv4. This means that your buildings will retain their true colour and gloss levels for significantly longer when clad with Colorcoat HPS200 Ultra™.

## Superior corrosion resistance



Colorcoat HPS200™ with Galvalloy™ roof after 7 years.



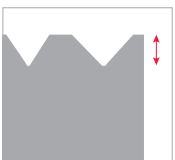
Standard plastisol on hot dip galvanised steel substrate roof after 7 years.

Most pre-finished steel products use a zinc metallic coating that provides corrosion resistance but leave cut edges vulnerable to peeling or premature paint delamination. Colorcoat HPS200 Ultra™ uses the Corus unique and proven Galvalloy™ metallic substrate which features a special mix of 95% zinc and 5% aluminium providing unrivalled corrosion protection, even at the cut edges.

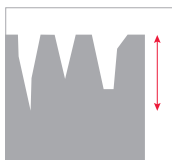
## Unique Scintilla™ emboss

The Scintilla™ emboss of Colorcoat HPS200 Ultra™ has been developed with a depth of only 40 microns, which makes it less likely to trap dirt than deeper leathergrain embosses. This ensures a thicker protective coating overall.

The Scintilla™ emboss provides a unique guarantee of authenticity and modern appearance. Unlike old fashioned leathergrain plastisols the emboss is subtle and appears smooth from a distance.



Colorcoat HPS200 Ultra™  
40 micron Scintilla™ emboss



Leathergrain plastisol  
60-100 micron emboss

## Typical properties

Colorcoat HPS200 Ultra™		Test standard	
Nominal organic coating thickness	(μm)*	200	EN 13523-1
Specular gloss (60°)	%	20-40	EN 13523-2
Scratch resistance	(g)	>3500	EN 13523-12
Abrasion resistance (Taber)	(mg)	<12	EN 13523-16
Flexibility:			
Minimum bend radius	(T)	0T (16°C) 1T (0°C)	EN 13523-7
Reverse impact	(J)	≥18	EN 13523-5
Adhesion (cross hatch)	(%)	100	EN 13523-6
Corrosion resistance:			
Salt spray	(h)	1000	EN 13523-8
Humidity	(h)	1000	EN 13523-25
UV resistance		Ruv4 and RC5	EN 10169

\* μm = micron

### General notes

The figures contained in this table are typical properties for solid colours and do not constitute a specification. Tested in accordance with EN13523. These figures relate to the topcoat. For details on test methods visit [www.colorcoat-online.com](http://www.colorcoat-online.com)

# Sustainability provided as standard

## Reduced environmental impact

When developing Colorcoat HPS200 Ultra™, Corus examined ways to reduce any environmental impact. Right from raw material production through manufacturing and installation and on to the product's re-use and end of life (recycling).



## Manufacture

- All traces of heavy metals and undesirable organotins and phthalate plasticisers have been removed from the topcoat and replaced with higher performing alternatives.
- Manufactured using 25% recycled steel.
- Solvents from the coatings are incinerated and the heat is captured for use in the manufacturing process.
- Product is fully traceable throughout its life.

## End of life

- Can easily be recycled without additional burden to the environment. Its use as steel scrap does not compromise the quality of new steel and it can be recycled again and again without any degradation in terms of properties or performance.
- True sustainable product i.e. at the end of its life it is returned to new use or function rather than being disposed of as waste.
- Well established steel scrap infrastructure that recovers the steel from demolition sites or shredding facilities and sends it back to the steel plant for recycling.



# Proven performance

## Product testing

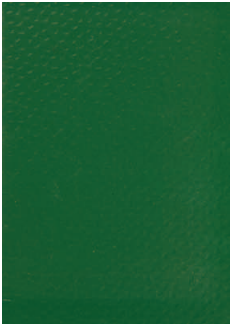


Corus weathering site,  
Arizona (desert).



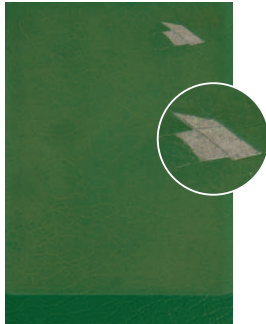
Corus weathering site,  
Bohus Malmon (coastal).

To ensure the integrity of Colorcoat™ products, Corus uses laboratory tests to measure their performance against corrosion, effect of sunlight, chemicals and abrasion. All testing of products is carried out in accredited laboratories to international standards.



Colorcoat HPS200 Ultra™

Exposure: 3000 hours



Standard Leathergrain  
Plastisol

Exposure: 2000 hours

Results from accelerated weathering tests (UV-B) carried out in accordance with EN 13523-10.

## Product Warranty

Corus can provide a warranty on a project basis. The factors which influence the warranty period are geographic location, colour choice, the building environment and use and whether the application is roof or wall.

Please contact Corus for more information about specific warranty periods and conditions before selecting colours for your location.

## British Board of Agrément Certificate

Colorcoat HPS200 Ultra™ has been designed to augment the durability of its predecessor Colorcoat HPS200™.

The long-term performance of Colorcoat HPS200™ has been recognised within BBA certificate 91/2717 as *“Colorcoat HPS200™ coating and metal treatment will protect the steel substrate against corrosion for a period in excess of 40 years in normal industrial, urban, suburban and rural environments in the UK.”*

For further details visit:

[www.colorcoat-online.com](http://www.colorcoat-online.com)



# Colour reassurance

## Colour information

### Colour consistency

If tonal consistency is critical, all cladding for a single elevation should come from the same production batch.

### Matching components

If accessories made from other materials are to be colour-matched to the roof or wall cladding, the best reference is the actual profiles or panels delivered to site, or material from the same batch.

### Metal hand samples



Metal hand samples are available for all colours. For a truer representation of colour and effect, please obtain metal hand samples from Corus.

For further details visit:

[www.colorcoat-online.com](http://www.colorcoat-online.com)

## BS & RAL reference table

Colour	BS	RAL
Goosewing Grey	10A05	7038
Pure Grey		000 55 00
Alaska Grey		7000
Seal		040 50 05
Anthracite		7016
Ice Blue		230 80 10
Duck Egg		230 70 10
Denim		5014
Cobalt		260 40 20
Midnight		5008
Cloud		210 80 10
Turquoise		6034
Wedgewood Blue	18C37	220 50 15
Spruce		200 50 10
Merlin Grey	18B25	180 40 05
Hamlet		9002
Meadowland	12B17	100 80 20
Moorland Green	12B21	100 60 20
Camouflage		110 50 10
Olive Green	12B27	100 30 20
Marlstone	10B15	1013
Honesty	10C31	1015
Mushroom	10B19	080 70 10
Straw		080 70 30
Svelte Grey	10B23	080 50 20
Albatross	18B17	240 80 05
Heather		040 70 05
Fox		040 50 20
Mole Brown		070 40 10
Ardenne		7022
White	00E55	9003
Black	00E53	9005

Signature colours

### RAL references

4 digit numbers are RAL Classic references.  
 7 digit numbers are RAL Design references.  
 British Standard or RAL reference numbers shown in the table, represent the nearest colours and are not exact matches to Colorcoat HPS200 Ultra™.

# Colorcoat HPS200 Ultra™

## New and improved

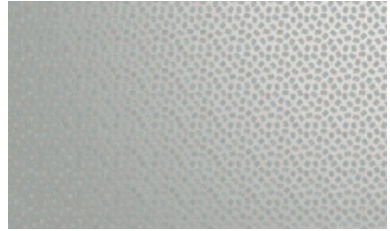
Building on the success of Colorcoat HPS200™, the new Colorcoat HPS200 Ultra™ is based upon a revolutionary coating system, providing dramatically improved colour stability and gloss retention.

Following consultation with the market, Corus has developed a new colour palette for this product, introducing environmental colours and tonal shades. These colours work well individually or together and can help your buildings blend successfully with their environment.

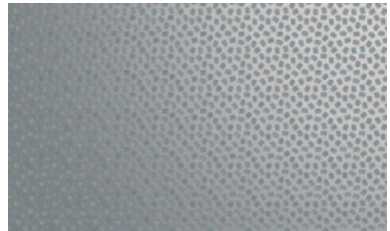
## Product benefits

- **Colour range inspired by architects**
- **Twice the colour and gloss retention of standard plastisols**
- **Unrivalled cut edge performance**
- **Environmentally harmful elements removed**
- **100% recyclable**
- **Supplied with Scintilla™ emboss as a mark of authenticity**

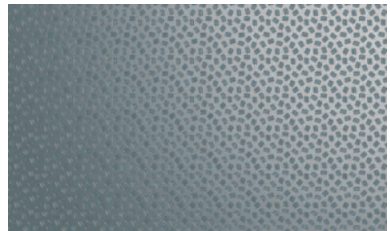
## ■ Signature colours



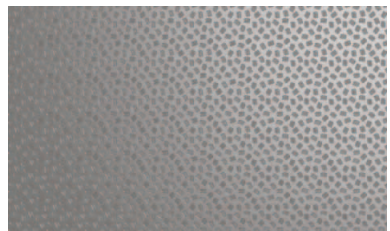
Goosewing Grey



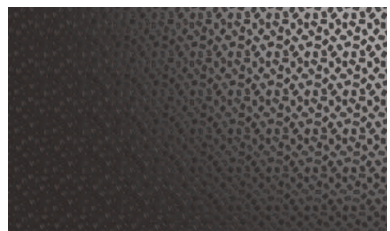
Pure Grey



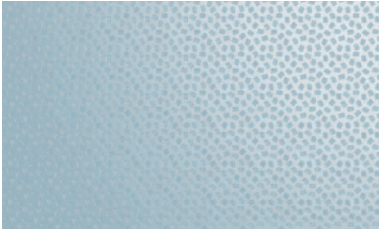
Alaska Grey



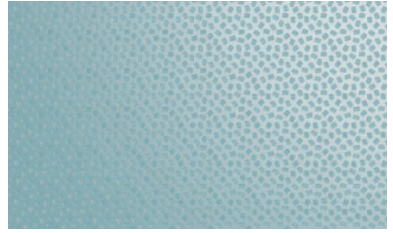
Seal



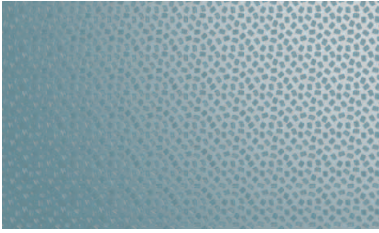
Anthracite



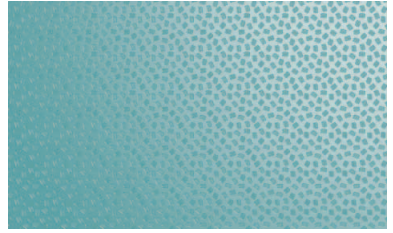
Ice Blue



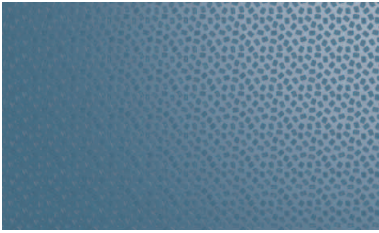
Cloud



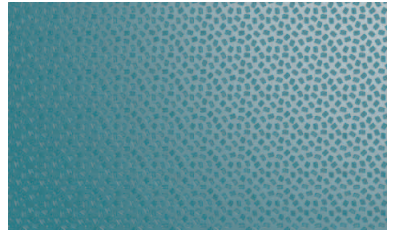
Duck Egg



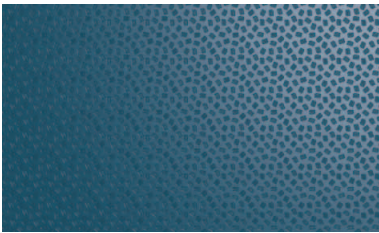
Turquoise



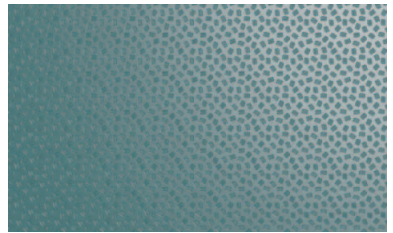
Denim



Wedgewood Blue



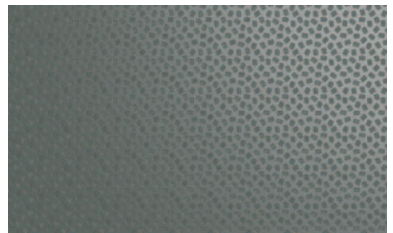
Cobalt



Spruce



Midnight



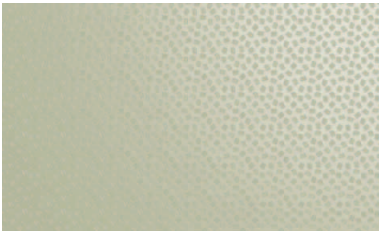
Merlin Grey



Hamlet



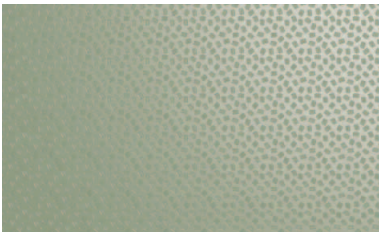
Marlstone



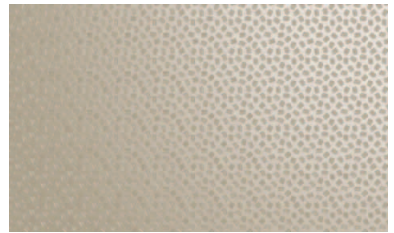
Meadowland



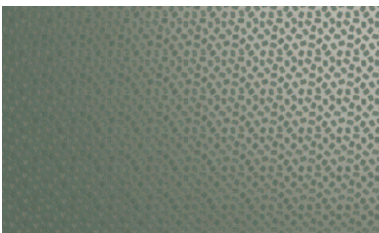
Honesty



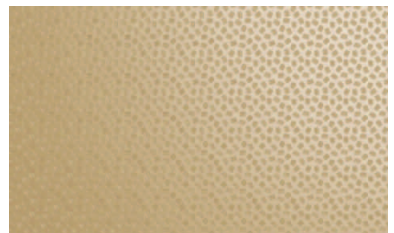
Moorland Green



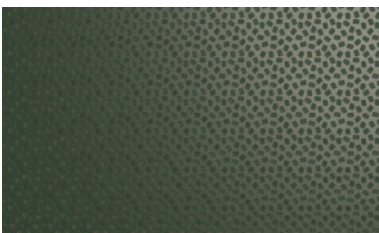
Mushroom



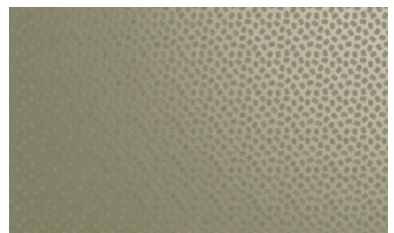
Camouflage



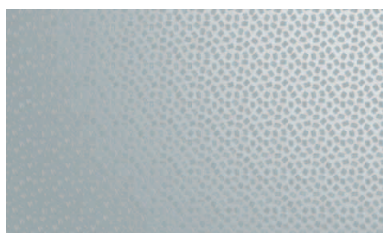
Straw



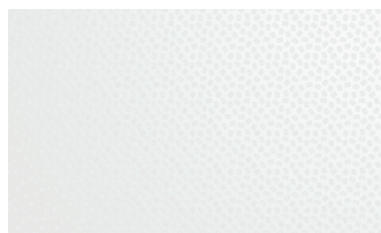
Olive Green



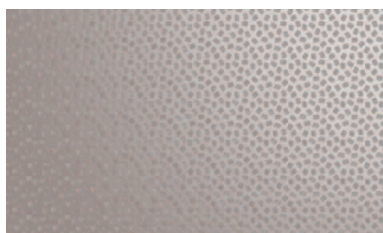
Svelte Grey



Albatross



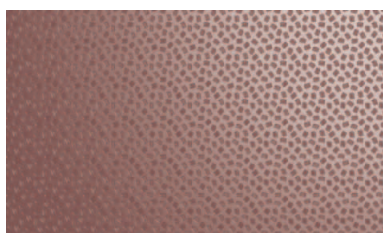
White



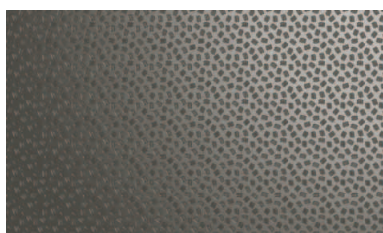
Heather



Black



Fox



Mole Brown



Ardenne

---

**[www.colorcoat-online.com](http://www.colorcoat-online.com)**

---

### **Trademarks of Corus**

Albatross, Ardenne, Colorcoat, Colorcoat HPS200 Ultra, Denim, Galvalloy, Hamlet, Honesty, HPS200, Ice Blue, Marlstone, Meadowland, Midnight, Mole Brown, Moorland Green, Scintilla and Svelte Grey are trademarks of Corus.

Corus is part of the Tata Steel group.

Care has been taken to ensure that the contents of this publication are accurate, but Tata Steel Europe Limited and its subsidiaries do not accept responsibility or liability for errors or information that is found to be misleading. Suggestions for, or descriptions of, the end use or application of products or methods of working are for information only and Tata Steel Europe Limited and its subsidiaries accept no liability in respect thereof.

Before using products or services supplied or manufactured by Tata Steel Europe Limited and its subsidiaries, customers should satisfy themselves as to their suitability.

Printed on material which is manufactured from ECF (Elemental Chlorine Free) pulp sourced from certified or well managed forests and plantations. Inks used are vegetable based.

Copyright 2009 Corus  
Language English ROW 1109

### **Sales Contact Details**

Corus Colors  
Shotton Works  
Deeside  
Flintshire  
CH5 2NH  
United Kingdom

T: +44 (0)1244 892434  
F: +44 (0)1244 836134