



Corus Colors

---

**Colorcoat Prisma®**

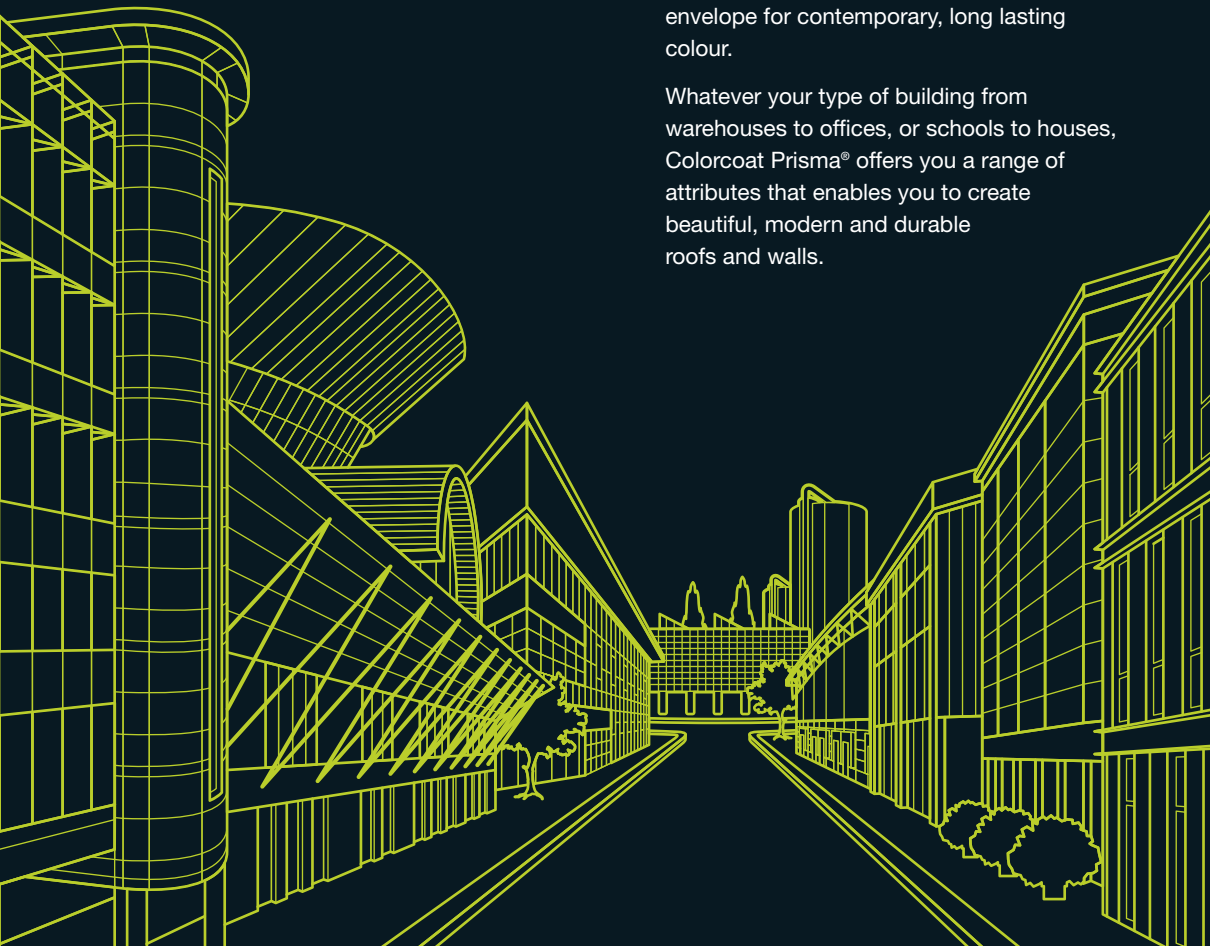
---

**Inspire your imagination**

## **Aesthetics that last**

Designed to withstand the rigours of the external environment, versatile, lightweight and strong, Colorcoat Prisma® pre-finished steel is the ideal choice for your building envelope for contemporary, long lasting colour.

Whatever your type of building from warehouses to offices, or schools to houses, Colorcoat Prisma® offers you a range of attributes that enables you to create beautiful, modern and durable roofs and walls.



# Performance

## Galvalloy™

Most pre-finished steel products use a zinc metallic coating that provides corrosion resistance but leaves cut edges vulnerable to peeling or premature paint delamination.

Colorcoat Prisma® uses the Corus unique and proven Galvalloy™ metallic substrate, a special mix of 95% zinc and 5% aluminium, providing unrivalled corrosion protection, even at the cut edges.

## Typical properties

Colorcoat Prisma®		Test standard	
Nominal organic coating thickness	(µm)*	50	EN 13523-1
Specular gloss (60°):	Non-matt colours	30–40	EN 13523-2
	Matt colours	3–5	EN 13523-2
Scratch resistance:	Non-matt colours	>3500	EN 13523-12
	Matt colours	>3000	EN 13523-12
Abrasion resistance: (Taber, 250 rev, 1kg)	Non-matt colours	<20	EN 13523-16
	Matt colours	<25	EN 13523-16
Flexibility:	Minimum bend radius	0.5T@16°C	EN 13523-7
	Reverse impact	18	EN 13523-5
	Adhesion (cross hatch)	100	EN 13523-6
	Pencil hardness	H	EN 13523-4
Corrosion resistance:	Salt spray	1000	EN 13523-8
	Humidity	1000	EN 13523-25
Corrosion resistance category		RC5 <sup>1</sup>	EN 10169
UV resistance category		Ruv4	EN 10169

\* µm = micron

### Notes

1. RC5 certification does not include matt colours, these are currently on test.
2. The figures contained in this table are typical properties and do not constitute a specification. Tested in accordance with EN 13523. For details on test methods visit [www.colorcoat-online.com](http://www.colorcoat-online.com)
3. Health and safety datasheets are available upon request.

## Water harvesting

Colorcoat Prisma® has passed the stringent BS 6920:2000 test 'Suitability of non-metallic products for use in contact with water intended for human consumption with regard to the effect on the quality of water.' The testing has confirmed that when in contact with Colorcoat Prisma®, the cold water odour and flavour, appearance, cytotoxicity, growth of aquatic micro-organisms and metal extraction is not adversely affected and within the safe guidelines as dictated by the BS standard. Colorcoat Prisma® is registered as an approved material with the Water Regulatory Advisory Scheme (WRAS) for cold water use and so can be used as part of a rainwater collection system as it does not adversely affect the quality of wholesome water supply.



# Proven performance

## Product testing



Corus Weathering site,  
Arizona (desert).



Corus Weathering site,  
Bohus Malmön (coastal).

To ensure the integrity of Colorcoat® products, Corus uses laboratory tests to measure their performance against corrosion, effect of sunlight, chemicals and abrasion.

All testing of products is carried out in accredited laboratories to international standards.

## Product Warranty

Corus can provide a warranty on a project basis. The factors which influence the warranty period are geographic location, colour choice, the building environment and use and whether the application is roof or wall.

Please contact Corus for more information about specific warranty periods and conditions before selecting colours for your location.

## British Board of Agrément Certificate

The long-term performance of Colorcoat Prisma® has been recognised within the BBA certificate 91/2717 and relates to the product use as external roofing and cladding or internal lining. *'Colorcoat Prisma® coating and metal treatment will protect the steel substrate against corrosion for a period in excess of 40 years in normal industrial, urban, and rural environments.'*



# Sustainability provided as standard

## Sustainability

The sustainability of a building in terms of its material usage, construction, occupation and end of life is becoming an ever more important consideration.

Corus is committed to promoting sustainable construction and is addressing a wide range of issues as part of a co-ordinated strategy. Please contact Corus for more information.

The environmental impact of the pre-finished steel coating during manufacture is minimal compared with the overall construction process and the building's full lifetime. However, we constantly strive to ensure that the manufacturing processes, and materials used to manufacture Colorcoat Prisma® are the most sustainable available.

## Re-use and recycling

Colorcoat Prisma® is 100% recyclable without any additional burden to the environment in terms of emissions to the atmosphere. There is a well established and very efficient steel recycling infrastructure which ensures all the scrap collected at end of life goes back into steel manufacture.

## Made in the UK

Colorcoat Prisma® is exclusively from Corus, and as such is fully traceable. From steel manufacture to processing, Colorcoat Prisma® uses some of the most advanced, and sustainable, technologies in the UK.



## Colorcoat® services

The Colorcoat® brand is recognised as the exclusive mark of quality and metal envelope expertise and is supported by a comprehensive range of services, technical advice and guidance.

### Colorcoat® Business Development Team

The team are readily available to advise you on the design, specification and construction of your metal building envelope.

Visit [www.colorcoat-online.com](http://www.colorcoat-online.com) to find out who the representative is for your region.

## BS & RAL reference table

Colour	BS	RAL
Athena		*
Pegasus		*
Aquarius		*
Atlantis		*
Kronos		*
Sirius		*
Orion		*
Zeus		*
Ephyra		*
Helios		*
Silver Metallic		9006
Grey Aluminium		9007
Denim		5014
Clover		6005
Hamlet		9002
Cream		1015
Oxide Red		3009
Chocolate Brown	04D44	8017
Black	00E53	9005
White	00E55	9010
Oyster		7035
Alaska Grey		7000
Slate Grey		7012
Anthracite		7016
Terracotta Matt	04C39	040 40 40
Copprum Matt		160 70 20
Anthracite Matt		7016

### RAL references

4 digit numbers are RAL Classic references.

7 digit numbers are RAL Design references.

British Standard or RAL reference numbers shown in the table, represent the nearest colours and are not exact matches to Colorcoat Prisma®.

\* These colours do not have equivalent BS/RAL references.

For further details visit:

[www.colorcoat-online.com](http://www.colorcoat-online.com)

# Colorcoat Prisma®

## Introduction

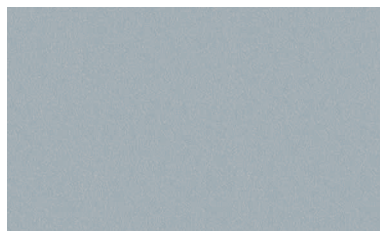
Colorcoat Prisma® is backed by even more testing and real world data to combine outstanding aesthetics with long lasting performance.

Following consultations with architects and our supply chain, we have developed a new contemporary colour palette for Colorcoat Prisma® which includes solids, metallics and new natural matt shades.

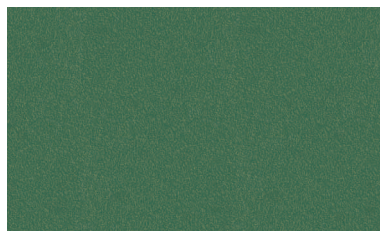
## Product benefits

- **Contemporary new colour range with an optically smooth finish for modern designs.**
- **All solid and metallic colours surpass requirements of Ruv4 and RC5 as per EN 10169 proving outstanding colour retention and corrosion resistance.**
- **Optimised Galvalloy™ metallic substrate for ultimate corrosion resistance and cut edge protection.**
- **Reverse side branding making traceability easy, so you can rest assured that your building is protected with the highest quality from Corus.**

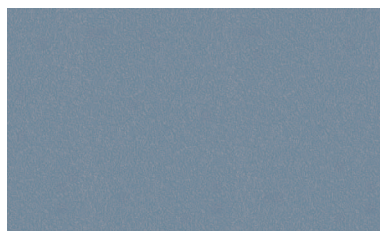
## Special metallics



Athena



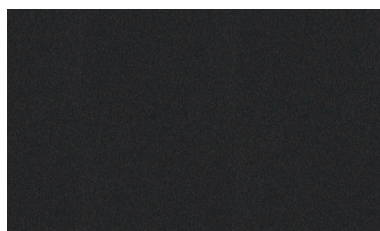
Pegasus



Aquarius

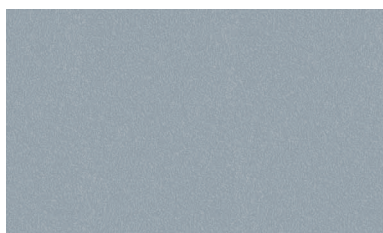


Atlantis

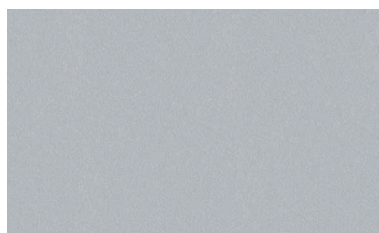


Kronos

## Solid metallics



Sirius



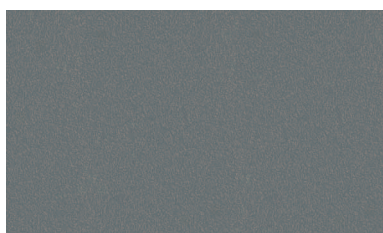
Silver Metallic (RAL 9006)



Orion

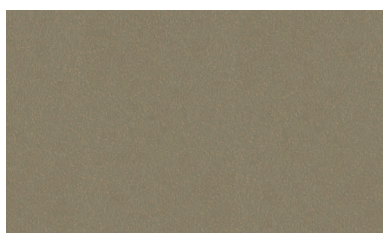


Grey Aluminium (RAL 9007)



Zeus

## Solid colours



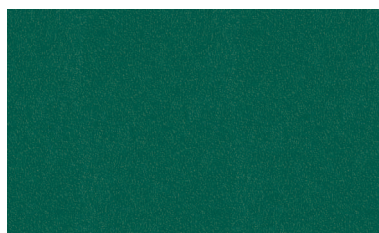
Ephyra



Denim (RAL 5014)



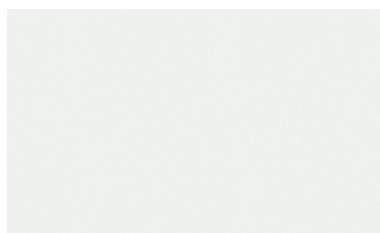
Helios



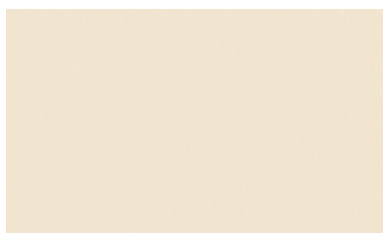
Clover (RAL 6005)



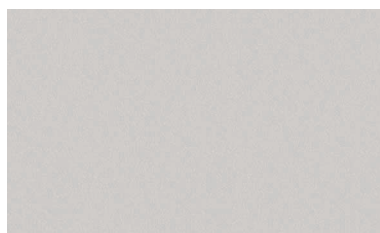
Hamlet (RAL 9002)



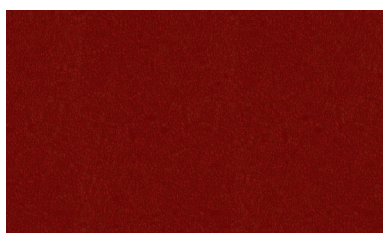
White (RAL 9010)



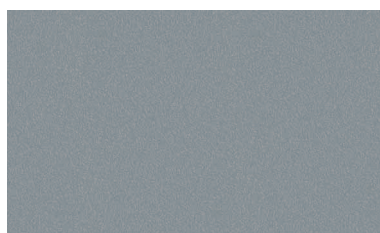
Cream (RAL 1015)



Oyster (RAL 7035)



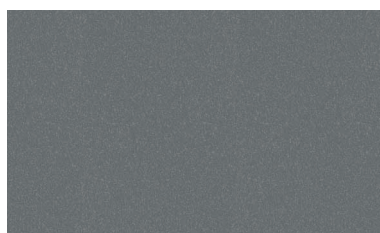
Oxide Red (RAL 3009)



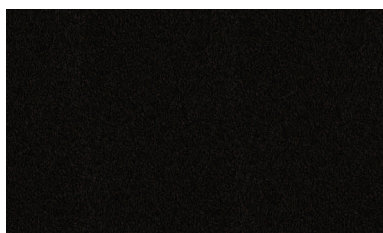
Alaska Grey (RAL 7000)



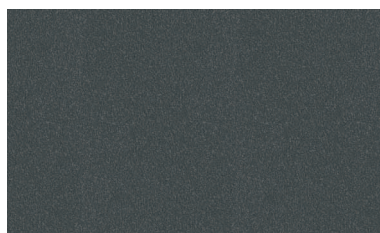
Chocolate Brown (RAL 8017)



Slate Grey (RAL 7012)

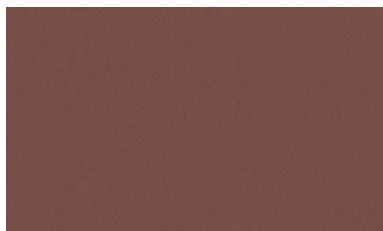


Black (RAL 9005)

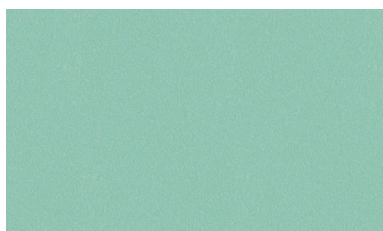


Anthracite (RAL 7016)

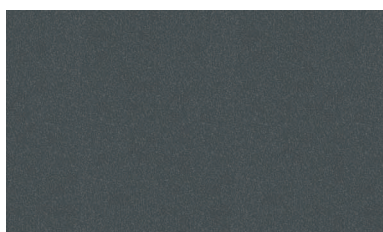
## Matt colours



Terracotta (RAL 040 40 40)



Copperium (RAL 160 70 20)



Anthracite (RAL 7016)

# Additional features

- Colorcoat Prisma® can be used as a pre-finished steel substrate for photovoltaic (PV) systems. It has been tested by TUV in conjunction with a PV laminate, and meets the requirements of IEC 61646.
- Colorcoat Prisma® is provided with a high performance backing coat as standard, but is also available double sided in limited colours for buildings with demanding internal environments or for applications such as rainscreens and rainwater goods. For availability of colour combinations please contact Corus.
- A selection of Colorcoat Prisma® colours have been developed to provide improved solar absorption so are ideal for perforated Transpired Solar Collectors. The solar absorption efficiency is colour dependent, please contact us for more information.

## Specification

To secure the peace of mind that comes from a rigorously manufactured and world wide tested product from Corus, please ensure Colorcoat® as well as the individual product name is specified: Corus Colorcoat Prisma® with Galvalloy™ hot-dip metallic coated steel.

For further details visit:

[www.colorcoat-online.com](http://www.colorcoat-online.com)

# Colour reassurance

## Colour consistency

If tonal consistency is critical, all cladding for a single elevation should come from the same production batch. All metallic shades exhibit a degree of directionality.

## Matching components

If accessories made from other materials are to be colour-matched to the roof or wall cladding, the best reference is the actual profiles or panels delivered to site, or material from the same batch.

## Metal hand samples

Metal hand samples are available for all colours. For a truer representation of colour and effect, please obtain metal hand samples online at [www.colorcoat-online.com](http://www.colorcoat-online.com)



---

[www.colorcoat-online.com](http://www.colorcoat-online.com)

---

### Trademarks of Corus

Aquarius, Atlantis, Colorcoat, Copprium, Galvalloy, Hamlet, Helios, Kronos, Orion, Pegasus, Prisma, Sirius and Zeus are trademarks of Corus.

Corus is part of the Tata Steel group.

Care has been taken to ensure that the contents of this publication are accurate, but Tata Steel Europe Limited and its subsidiaries do not accept responsibility or liability for errors or information that is found to be misleading. Suggestions for, or descriptions of, the end use or application of products or methods of working are for information only and Tata Steel Europe Limited and its subsidiaries accept no liability in respect thereof.

Before using products or services supplied or manufactured by Tata Steel Europe Limited and its subsidiaries, customers should satisfy themselves as to their suitability.

Printed on material which is manufactured from ECF (Elemental Chlorine Free) pulp sourced from certified or well managed forests and plantations. Inks used are vegetable based.

Copyright 2010 Corus  
Language English ROW 0410

### Sales Contact Details

Corus Colors  
Shotton Works  
Deeside  
Flintshire  
CH5 2NH  
United Kingdom

T: +44 (0)1244 892434  
F: +44 (0)1244 892321